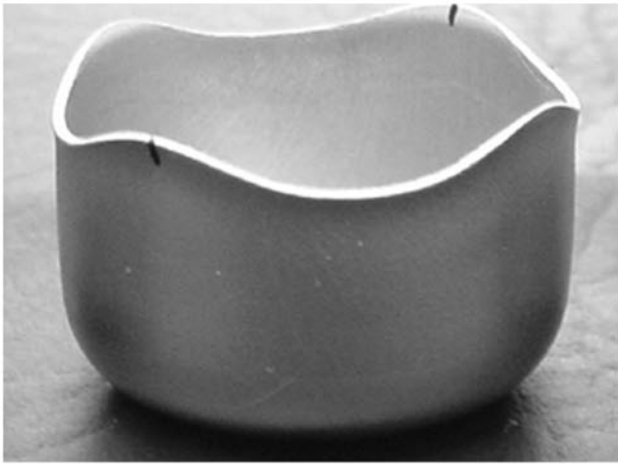


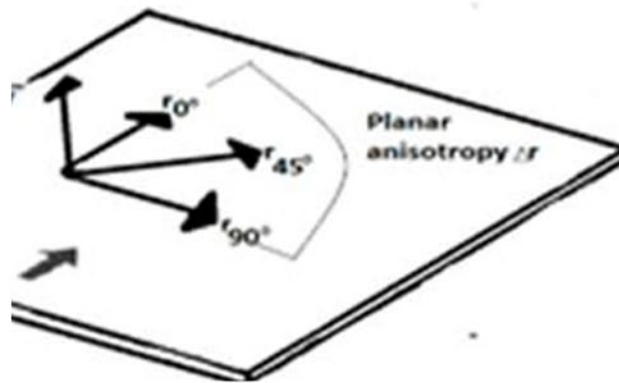
# Deep Drawing Performance

Learn how our Material Support & Solutions team solved this customer material issue.



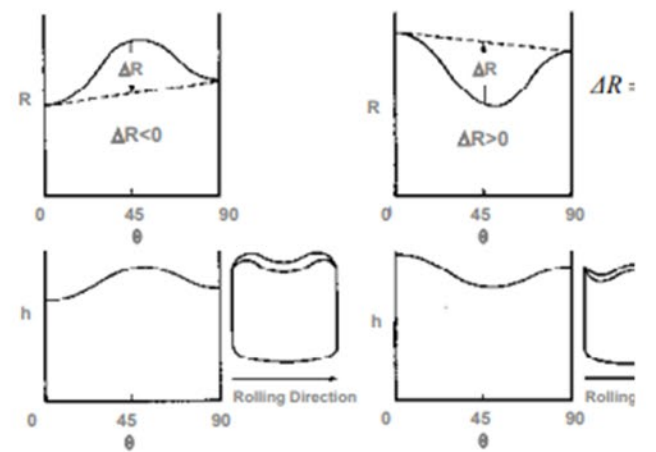
## THE PROBLEM

A long term customer experienced roundness issues with a new deep-drawn component, even though similar parts made from comparable steel had consistently performed well.



## THE ANALYSIS

Worthington Steel's Technical Services team analyzed r-value and planar anisotropy, generating new data that revealed subtle material differences affecting how the part formed.



## THE SOLUTION

By refining the cold-rolling process and validating adjustments through lab-scale testing, Worthington Steel resolved the issue and helped the customer achieve improved productivity and consistent quality.

## — THE ACTION

When steel is not performing to expectations, contact the Material Support and Solution team at Worthington to get the steel you need.